



# INDOFINE Chemical Company, Inc.

121 Stryker Lane, Bldg. 30, Suite 1 • Hillsborough, NJ 08844 • U.S.A.

Phone: (908) 359-6778 • FAX: (908) 359-1179

website: [www.indofinechemical.com](http://www.indofinechemical.com)

e-mail: [chemical@indofinechemical.com](mailto:chemical@indofinechemical.com)

## CERTIFICATE OF ANALYSIS

Catalog Number: K-001

Product Name: **KARANJIN**

CAS Number: [521-88-0]

Lot Number: 1605771

Chemical Formula: C<sub>18</sub>H<sub>12</sub>O<sub>4</sub>

Molecular Weight: 292.28

Melting Point: 154-156°C

Appearance: Off white crystalline powder

Moisture(KF): 0.36%

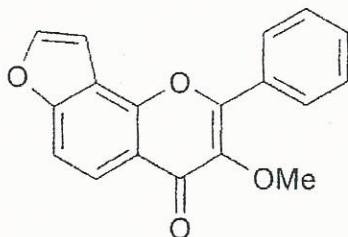
TLC: Hexane:Ethyl acetate (1:1)

Solubility: Soluble in chloroform

NMR Spectrum: Enclosed (conforms to the structure)

Storage: Store in a cool, dry place

Purity(HPLC): 99.31%





# INDOFINE Chemical Company, Inc.

121 Stryker Lane, Bldg. 30, Suite 1 • Hillsborough, NJ 08844 • U.S.A.

Phone: (908) 359-6778 • FAX: (908) 359-1179

website: [www.indofinechemical.com](http://www.indofinechemical.com)

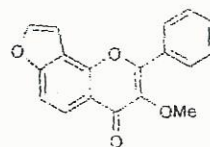
e-mail: [chemical@indofinechemical.com](mailto:chemical@indofinechemical.com)

## HPLC ANALYSIS

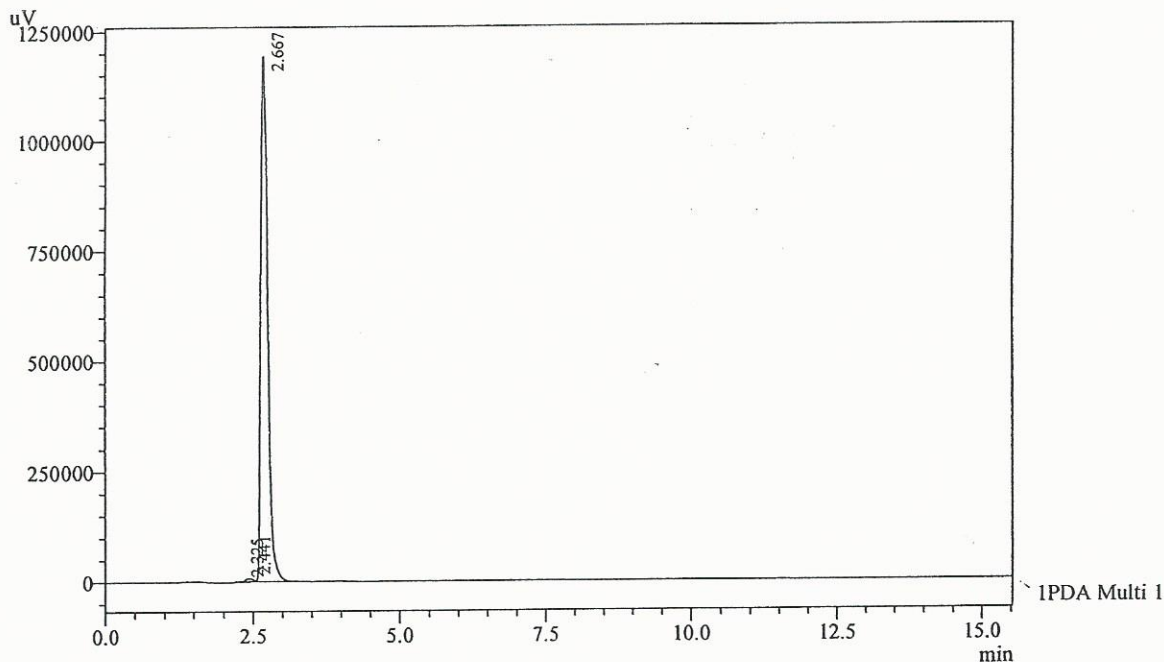
Acquired by : Admin  
Sample Name : Karanjin  
Sample ID : 1.0 kg from 1.5 kg Lot  
Injection Volume : 20 uL  
Data Filename : 030516B.lcd  
Method Filename : Isocratic Method.lcm

Catalog No.: K-001  
Product Name: Karanjin  
Lot No.: 1605771

Column : Gemini C-18(2), (250mm x4.6mm 5.0μ)  
Flow : 2.000 mL/min.  
Mobile Phase : A(20% of water) B(80% of Acetonitrile)



Chromatogram



1 PDA Multi 1 / 320nm 4nm

PeakTable

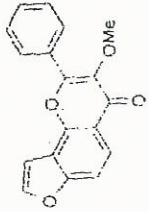
PDA Ch1 320nm 4nm

Peak#	Name	Ret. Time	Area	Area %	Relative Retention Time
1	RT:2.325	2.325	5177	0.05	0.00
2	RT:2.441	2.441	65473	0.64	0.00
3	karanjin	2.667	10125444	99.31	0.00
Total			10196094	100.00	





INDOFINE Chemical Company, Inc.  
 121 STRYKER LANE  
 BLDG. 30, SUITE 1  
 HILLSBOROUGH, NJ 08844



Catalog No.: K-001  
 Product Name: Karanjin  
 Lot No.: 1605771

<sup>1</sup>H NMR CDCl<sub>3</sub>

Analysed By : SPM

7.71 x  
 7.71 x  
 7.61 x  
 7.61 x  
 7.51 x  
 7.51 x  
 7.41 x  
 7.41 x  
 7.31 x  
 7.31 x  
 7.21 x  
 7.21 x  
 7.11 x  
 7.11 x  
 7.01 x  
 7.01 x  
 6.91 x  
 6.91 x  
 6.81 x  
 6.81 x  
 6.71 x  
 6.71 x  
 6.61 x  
 6.61 x  
 6.51 x  
 6.51 x  
 6.41 x  
 6.41 x  
 6.31 x  
 6.31 x  
 6.21 x  
 6.21 x  
 6.11 x  
 6.11 x  
 6.01 x  
 6.01 x  
 5.91 x  
 5.91 x  
 5.81 x  
 5.81 x  
 5.71 x  
 5.71 x  
 5.61 x  
 5.61 x  
 5.51 x  
 5.51 x  
 5.41 x  
 5.41 x  
 5.31 x  
 5.31 x  
 5.21 x  
 5.21 x  
 5.11 x  
 5.11 x  
 5.01 x  
 5.01 x  
 4.91 x  
 4.91 x  
 4.81 x  
 4.81 x  
 4.71 x  
 4.71 x  
 4.61 x  
 4.61 x  
 4.51 x  
 4.51 x  
 4.41 x  
 4.41 x  
 4.31 x  
 4.31 x  
 4.21 x  
 4.21 x  
 4.11 x  
 4.11 x  
 4.01 x  
 4.01 x  
 3.91 x  
 3.91 x  
 3.81 x  
 3.81 x  
 3.71 x  
 3.71 x  
 3.61 x  
 3.61 x  
 3.51 x  
 3.51 x  
 3.41 x  
 3.41 x  
 3.31 x  
 3.31 x  
 3.21 x  
 3.21 x  
 3.11 x  
 3.11 x  
 3.01 x  
 3.01 x  
 2.91 x  
 2.91 x  
 2.81 x  
 2.81 x  
 2.71 x  
 2.71 x  
 2.61 x  
 2.61 x  
 2.51 x  
 2.51 x  
 2.41 x  
 2.41 x  
 2.31 x  
 2.31 x  
 2.21 x  
 2.21 x  
 2.11 x  
 2.11 x  
 2.01 x  
 2.01 x  
 1.91 x  
 1.91 x  
 1.81 x  
 1.81 x  
 1.71 x  
 1.71 x  
 1.61 x  
 1.61 x  
 1.51 x  
 1.51 x  
 1.41 x  
 1.41 x  
 1.31 x  
 1.31 x  
 1.21 x  
 1.21 x  
 1.11 x  
 1.11 x  
 1.01 x  
 1.01 x  
 0.91 x  
 0.91 x  
 0.81 x  
 0.81 x  
 0.71 x  
 0.71 x  
 0.61 x  
 0.61 x  
 0.51 x  
 0.51 x  
 0.41 x  
 0.41 x  
 0.31 x  
 0.31 x  
 0.21 x  
 0.21 x  
 0.11 x  
 0.11 x  
 0.01 x  
 0.01 x

DFILE K-Jin (250) 1H.als  
 COMINT K-Jin (250) 1H NMR CDCl<sub>3</sub>

OBNUC 1H  
 EXMOD NON  
 OBFRQ 399.65 MHz  
 OBSET 124.00 KHz  
 OBFIN 10500.00 Hz  
 POINT 16384  
 FREQU 7992.91 Hz  
 SCANS 16  
 ACQTM 2.0500 sec  
 PD 2.0000 sec  
 PWI 7.80 usec  
 IRNUC 1H  
 CTEMP 22.6 c  
 SLVNT CDCL<sub>3</sub>  
 EXREF 0.00 ppm  
 BF 0.30 Hz  
 RGAIN 15

